

Installation Active Valve Control

MB W213 / S213

MB A238 / C238

E53 / E63 (S) AMG

Inhalt

| | |
|---|----|
| 1. Disclaimer | 3 |
| 2. Copyright | 3 |
| 3. Safety Instruction | 3 |
| 4. General Information | 3 |
| 5. General Remarks | 3 |
| 6. Place of installation / Covers | 4 |
| 7. CAN-BUS Connection | 6 |
| 7.1 Prefacelift | 6 |
| 7.1 Facelift | 8 |
| 7.2 Coupé / Cabrio | 9 |
| 8. Electronic Valve Connector | 10 |

1. Disclaimer

The content listed in this manual is created with greatest possible care. The Cete Automotive GmbH assumes no responsibility for the completeness, topicality, and accuracy for the listed content. The use of content takes place at the user's own risk. Therefore we - the Cete Automotive GmbH - assume no liability and responsibility for damages and defects, which arise from operation or incorrect handling and maintenance.

2. Copyright

The published contents, works and information in this manual are subject to the German copyright law. Any form of reproduction, processing/editing, distribution, copying, editing, translation, storage and any kind of use outside the limits of copyright law require the written approval of the particular. Unauthorized copying/ saving of the provided information in this manual are illegal and criminal.

3. Safety Instruction

The installation can only be fulfilled by trained specialists. The installation has to be done while the car's battery is unplugged. The usage of the Active Valve Control is only applicable for the car models mentioned in this mounting guideline. The installation has to be done step by step as it's described in this mounting guideline. The Cete Automotive GmbH does not take responsibility for damages, caused through:

- improper installation
- the usage of unsuitable connectors
- installations in not mentioned car models

The producer reserves the right to change components without giving reasons Errors and omissions excepted.

4. General Information

We ask you to read this manual thoroughly and completely and uphold to the given instructions. During the development we focused on safety, ease of use, design, innovative development, etc., to guarantee a high-quality product for the consumer. Despite the greatest care improper installation and using or incorrect operation can result in material damages. Depending on the product and its purpose it may be necessary to check the legal requirements of the country before commissioning. To receive consideration for warranty claims the product has to be send back with its original package, the proof of purchase and an error description. Please note the returns policies. The warranty regulations apply. The warranty claims and the operating permit expire through: unauthorized modification of the product, own repairing, violent impacts, improper use, opening the case.

5. General Remarks

Please note, that the Active Valve Control is a vehicle requiring official approval product. Please register this product as soon as possible.

The Images and Content shown in this installation guide only serve as a help for you. Please remove the covers according to the repair manual of the respective manufacturer.

6. Place of installation / Covers



Step 1)

Open the trunk and remove the coverings to the bottom part of the trunk.

You need to remove the cover on the right site.





Step 2)

For removing the cover on the right site, it might be helpful to remove the centre part of the entry panel. This is simply clipped.

Removing the right site is not always necessary, it just helps to lay the can wire to the front.



This is an example rubber which can be used for laying the wires to the outside.

7. CAN-BUS Connection

7.1 Prefacelift



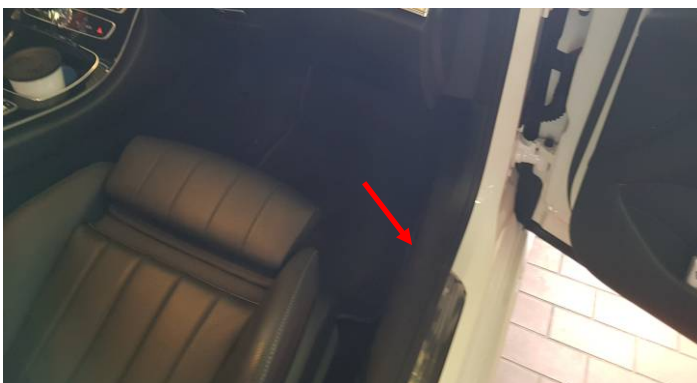
Step 1)

You need to locate and connect the CAN-BUS wire.

Please lay the can wire to the front right site behind the entry panel.



The rear seats are simply clipped in, when removing the seats, take care about connected plugs.



Step 2)

Please gently pull the entry panel. It is hold by clips.



Usually it is enough to lift up the carpenter a bit to find the needed can wires. A full remove is mostly not required.

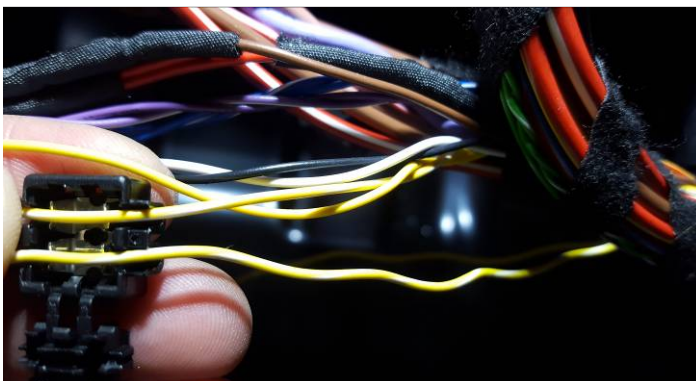


Step 3)

Find the required can-wires, they have the color:

Purple/White twisted with Purple.

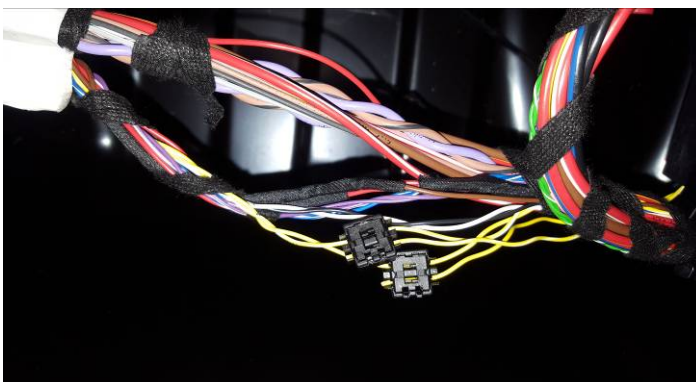
Connect our Yellow/White with the cars Purple/White
Connect our Yellow with the cars Purple.



Step 4)

Use a **pliers-Tool** to close the connectors.

„Finger“pressed pressure is not enough to establish a connection.



This is just as an example; you need to connect the “purple/white + purple” can wires.

7.1 Facelift



Step 1)

You need to locate and connect the CAN-BUS wire.

Please lay the can wire to the ecu under the rear seats.



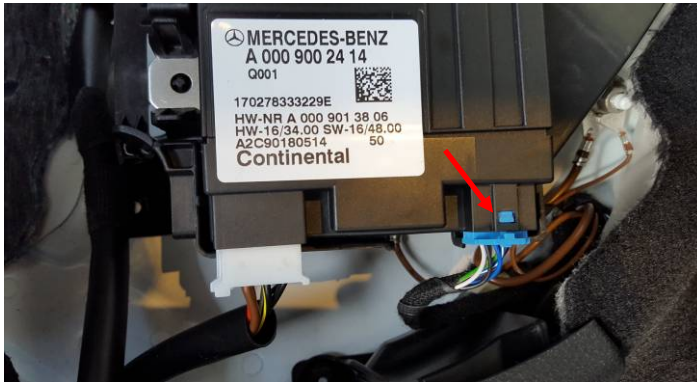
The rear seats are simply clipped in, when removing the seats, take care about connected plugs.



Step 2)

Find the ECU under the rear seats, there is the needed can connection.

Blue/White + Blue.



Step 3)

As option you can use the supplied connecting materials.

Connect our Yellow/White with the cars Blue/White
Connect our Yellow with the cars Blue.



Step 4)

Use a **pliers-Tool** to close the connectors.

„Finger“ pressed pressure is not enough to establish a connection.

7.2 Coupé / Cabrio



For the Coupé/Cabrio we in any case recommend to lay the Can-Wire to the front right side entry panel and to connect the needed color of chapter 7.1 or 7.2 directly at that place.

8. Electronic Valve Connector

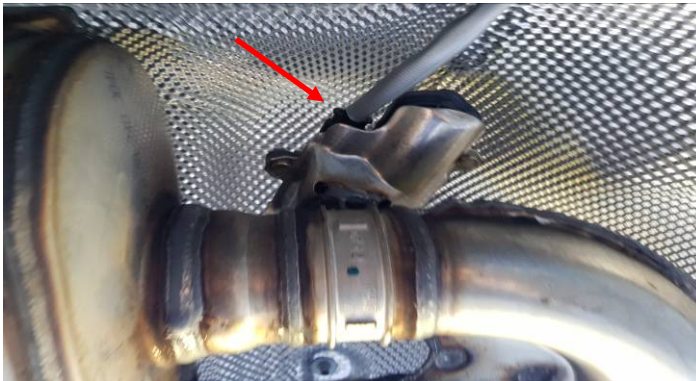


Step 1)

Lay the connections for the valves to the outside. There is a plastic cover which can be removed to lay the wires out.

Please take care to fit it fully back to place after you made a bypass into it for the wiring.





Step 2)

Remove the plug from the exhaust valve motor.



Our adapter is inserted Plug/Play.



We recommend to lay the wire above the heating protection sheet, to avoid temperature problems.



Step 3)

Please perform a quick-check before you put back all covers.

Ensure that all wires are well fixed.